

By Jessica Blanco
S a W e

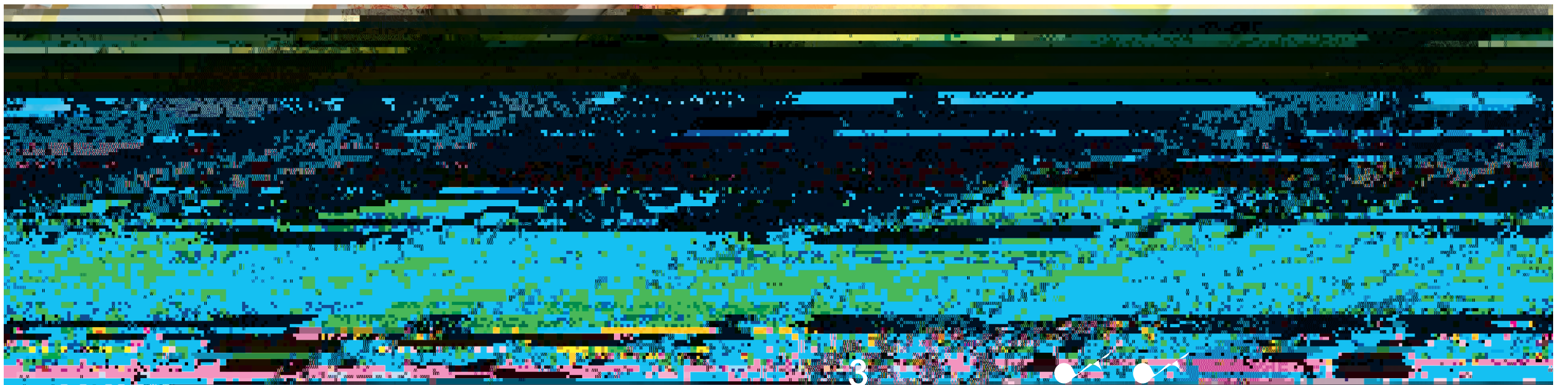
The Museum of the African Diaspora, located in downtown San Francisco, is a unique new facility that showcases the global influence of African people through their emigration and the international assimilation of their culture.

A new exhibit opening later this month will show the impact of African culture on New Orleans, a city in which the influence of African people is particularly notable.

MoAD, which opened late last year as a mandate from the city of San Francisco to include an African-American cultural presence and incorporate locally and nationally known intellectuals and community leaders, has made this the only major museum of its kind.

"MoAD is the first museum to really focus on showing that we are a global village, using our African origins as our point of commonality," said Denise Bradley, the museum's executive director.

Diaspora refers to the scattering of people far from their ancestral



Choose from three spectacular communities in

